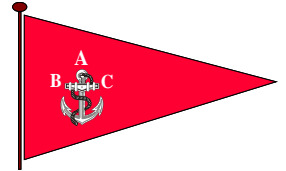


Aberdour Boat Club

2022 Regatta

Sailing Instructions



RULES

Racing will take place under the 'rules' as defined in the Racing Rules of Sailing the prescriptions of the RYA, the Notice of Race, these sailing instructions and any appropriate class rules. In the event of any conflict with the Notice of Race these sailing instructions will prevail.

CONDITIONS OF ENTRY

General Conditions

The safety of a yacht and her entire management including insurance shall be the sole responsibility of the owner/skipper racing the yacht who must ensure that the yacht and crew are adequate to face the conditions that may arise in the course of the race. These sailing instructions shall not, in any way limit or reduce the absolute responsibility of the owner/skipper for the crew, the yacht and the management thereof. The race organisers shall not be responsible for any loss, damage, death or personal injury howsoever caused to the any person, as a result of their taking part in the race or races. Moreover, every owner/skipper warrants the suitability of the yacht for the race or races.

Some of the courses include Forth Ports channel markers, which define protected channels (including Mortimer's Deep) as turning marks of the course. The use of Forth Ports markers as turning marks is permitted by Forth Ports only on the condition that due care is taken by competitors to ensure that no damage is done to the markers. Any such damage will be the sole responsibility of the individual competitors who are advised to ensure that their insurance policy covers such eventualities. Notice is drawn to Forth Ports Bylaws that place certain restrictions on navigation. All competitors should be familiar with these Bylaws, a copy of which is posted in the Aberdour Boat Clubhouse. It should be noted that no vessel shall approach within 200 metres of berthed tankers at the Braefoot Marine Terminals. Vessels in breach of compliance with these Bylaws will be subject to disqualification.

It shall be understood that by participating in this regatta, the owner/skipper confirms that the entrant has valid insurance cover in respect of third party and public liability risks.

Measurement or Rating Certificates

All yachts will compete under the current RYA Portsmouth Yardstick scheme (Base Rig) as amended by the current FYCA Handicap List.

ELIGIBILITY

All Yachts who have satisfied the above insurance requirements, entered the race and paid their race fees,

NOTICES TO COMPETITORS

Notices to competitors will be posted by email and/or on the official notice board in the Aberdour Boat Club house.

CHANGES TO SAILING INSTRUCTIONS

Changes to the sailing instructions will be posted for at least one hour before the advertised starting time of the race concerned. Changes in the sailing instructions will be indicated by displaying **flag L** (yellow and black quarters).

Late changes in the sailing instructions will be posted on a board on the seaward end of the pier. Such changes will be indicated by **flag L flown** from the **mast at the end of the pier / Committee Boat?**.

SIGNALS MADE ASHORE

Signals made ashore will be hoisted on the flagpole located at the end of the Aberdour harbour stone pier.

START SEQUENCE

Shore based or (Committee Boat) ? flag signals and the order and times of audible warning signals are as follows:

Flag

Preparatory Flag **P** white rectangle within blue rectangle
Slow Handicap Yachts **J** horizontal white between blue bars
Fast handicap yachts **E** blue above red horizontal bars

N.B. Depending on the number of entrants classes may be combined into a single start in which case Flag C will be used. blue top and bottom horizontal bars, white with red central horizontal bar

▲ denotes flag raised ▼ denotes flag lowered - start of class race

Time (hrs)	Class Flag	Preparatory Flag	Sound
1430	J▲		horn
1431		P ▲	horn
1434		P ▼	horn
1435	J ▼ E ▲		horn
1436		P ▲	horn
1439		P ▼	horn
1440	E ▼		horn

SLOW HANDICAP YACHTS.

Those boats with handicap 1101 or greater.

Boats may enter with a restricted (white sail, no spinnaker/cruising shoot) handicap which must be made clear to the race officer prior to the start.

FAST HANDICAP YACHTS.

Those boats with a handicap 1100 or less.

Boats may enter with a restricted (white sail, no spinnaker/cruising shoot) handicap which must be made clear to the race officer prior to the start.

COURSE AREA

The course area is on the Forth Estuary near Aberdour all shown on Admiralty Chart no 736.

THE COURSE

The course will be determined by the race officer depending on wind direction and displayed on boards at the end of the pier. Unless previously notified it will be from a course as shown in the ABC Course Chart.

MARKS

Course marks are as described on the Aberdour Course Chart.

STARTS

Starting Line, the starting line is defined as the line between the mast on the Aberdour stone pier bearing the Aberdour Boat Club burgee and an outer starting line mark, a red buoy with a yellow top flag.

OR – The starting line is defined as a line between the main mast of the Committee boat and an outer starting mark, a pink buoy with an old wooden pole and a yellow top mark

RECALLS

Individual recalls will be signalled by **flag X** (blue cross on a white background) accompanied by two sound signals in quick succession.

General recalls will be signalled by the **First Substitute** pennant (yellow within blue). First substitute will be lowered four minutes after the aborted start. No sound signal will be made. Subsequent starts will be as in schedule of races.

CHANGE OF COURSE AFTER THE START

The Race Officer may shorten the course in accordance with RRS 32 by displaying **flag S** (a blue rectangle within a white background)

COMMUNICATIONS

Communications with ABERDOUR RACE CONTROL can be made on VHF channel 77.

FINISHING

This will be the same as the start line. For a shortened course, Flag S will be displayed aboard a marshal boat and the nearby rounding mark. If any class fails to finish within the time limit the committee will endeavour to record times at the turning mark immediately before the time limit has passed, in order to determine finishing places. If this is not possible the race will be abandoned.

TIME LIMITS

RRS 35 shall not apply,

(a) The time limit for each race will be 3 hours from the start. The race will be valid for all those yachts finishing within the time limit.

(b) When the first yacht finishes within the prescribed time limit, the race will be valid for those yachts that finish within one hour of the finishing time of the first yacht.

(c) When no yacht finishes within the prescribed time limit, see Finishing above.

Abandoned races may or may not be re-scheduled.

PROTESTS

Intended protests between competitors must be communicated verbally and with the use of **flag B** (full red) at the time of the incident. Failure to display, failure to notify the protested yacht or late signal display will make the protest invalid. Details of all protests shall be written on RYA Protest Forms available from the Aberdour Boat Clubhouse and shall be lodged there within sixty minutes of the last yacht finishing, unless extended at the discretion of the Race Committee. Protests will be heard in approximate order of receipt as soon as possible.

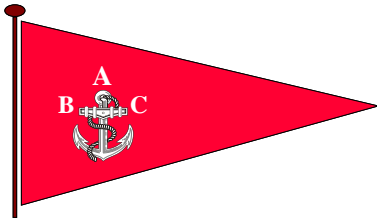
ALTERNATIVE PENALTIES

Should a yacht be motoring after its preparatory signal it may exonerate itself by executing two full 360 degree turns prior to clearing the start line after its starting signal has been made. These turns have to be made under sail with its motor off, and at no time whilst executing this manoeuvre should the yacht inconvenience any other yacht that is racing.

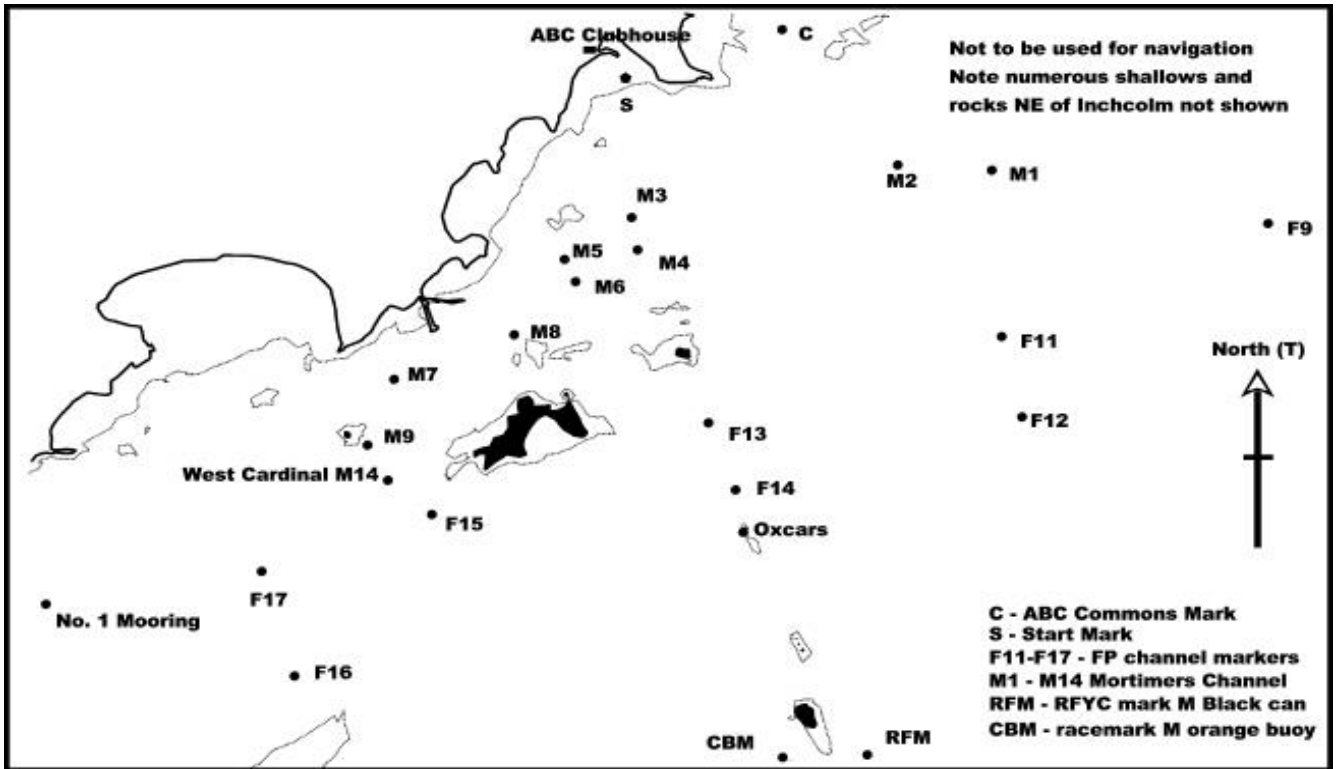
This penalty (referred to as a 720 degree turn) shall also apply if a yacht wishes to exonerate herself after collision with a race mark or impeding another vessel in contravention of the rules. These turns shall be made prior to reaching the next turning mark of the course and at no time whilst executing this manoeuvre should the yacht inconvenience any other yacht that is racing.

PRIZEGIVING

Trophies and prizes will be awarded to the winner of each race sailed. Additional prizes for each class may be awarded at the discretion of the race committee. Awards will be made in the Aberdour Boat clubhouse on 13 August 2022 at approx. 1730hrs



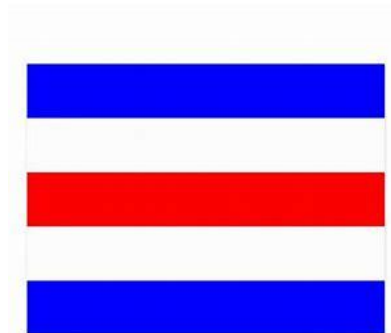
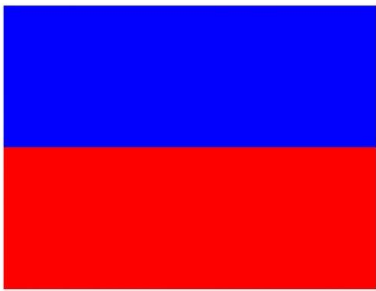
Aberdour Boat Club Course Chart



CBM: 56°00.4'N 003°17.0'W RFM: 56°00.2'N 003°15.8'W

Course	UPPERCASE LEAVE TO PORT (Port is Capital) lower case leave to starboard						Distance NM
A	S	M4	M2	S			2.7
B	s	m2	m4	s			2.7
C	S	M6	M4	S	M3	S	3.0
D	s	m3	s	m4	m6	s	3.0
E	S	M6	M2	C	S		3.2
F	s	c	m2	m6	s		3.2
G	S	M6	F11	C	S		4.1
H	s	c	f11	m6	s		4.1
J	S	M6	f11	f13	C	S	5.3
K	s	c	F13	F11	m6	s	5.3
L	S	M14	F15	F11	S		5.7
M	s	f11	f15	m14	s		5.7
N	S	M14	F15	CBM	RFM	S	6.3
P	s	rfm	cbm	f15	m14	s	6.3
Q	S	No1	CBM	RFM	M1	S	9.4
R	s	m1	rfm	cbm	no1	s	9.4

Flags Used



Flag E

Flag C



Flag L



Flag P



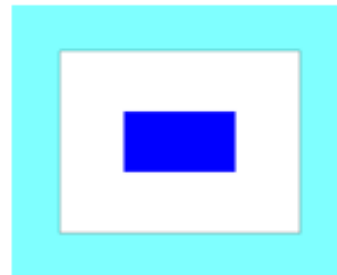
Flag J



Flag X



Flag First Substitute Pennant



Flag S



Flag B